



GILLESPIES

CRANE SERVICES

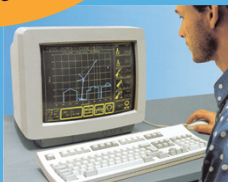
LTM1040-2.1

All Terrain Mobile Crane

Max. Lifting Capacity: **40.0 metric tonne at 2.5 m**

Max boom Length: **44.5 m**

Featuring



Computerised Lift Plan Simulation

RATED CAPACITY

40 Tonnes at 2.5m radius

400 kg at 39m radius

35m Main Boom

9.5m Fly Jib

Hook Height to 46m

All Wheel Steer - 4WD

OUTRIGGER BASE

Full: 6.27m x 6m

Half: 6.27 x 4.3m

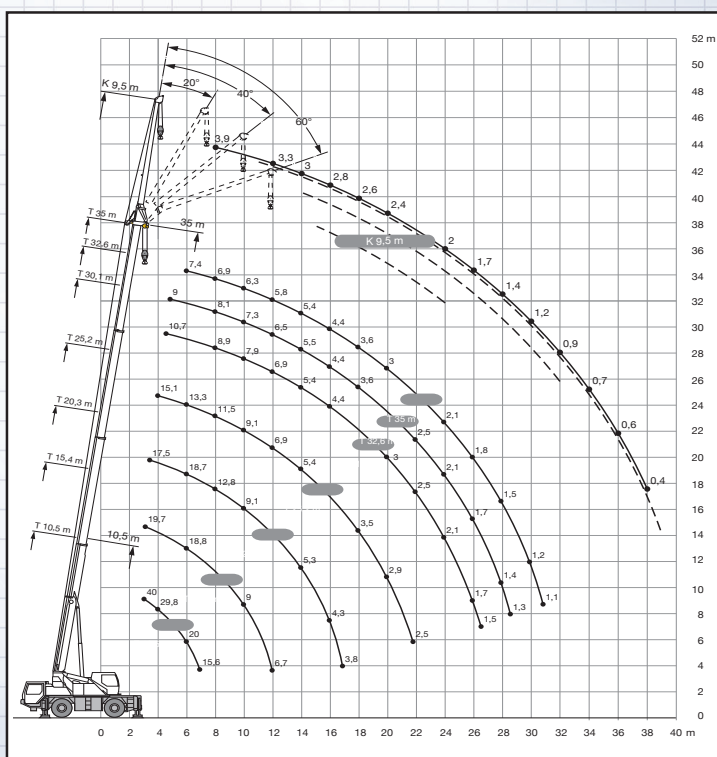
OVERALL DIMENSIONS

Width 2.750 metres

Length 10.915 metres

Height 3.6 metres

This mobile crane is excellent for sites with limited space. The Fly Jib can be offset to 60°



Tel: 02 888 77888 Fax: 02 888 77877

Visit our website www.gillespiecranes.com.au

Our Strength is Service