



GILLESPIES

CRANE SERVICES

Featuring



Computerised Lift Plan Simulation

RATED CAPACITY

55 Tonnes at 2.5m radius
600 kg at 48m radius
40m Main Boom
16m Fly Jib
Hook Height to 57m

All Wheel Steer - 6WD

OUTRIGGER BASE

Full: 7.4m x 6.3m
Half: 7.4 x 4.5m

OVERALL DIMENSIONS

Width 2.850 metres
Length 11.360 metres
Height 3.650 metres

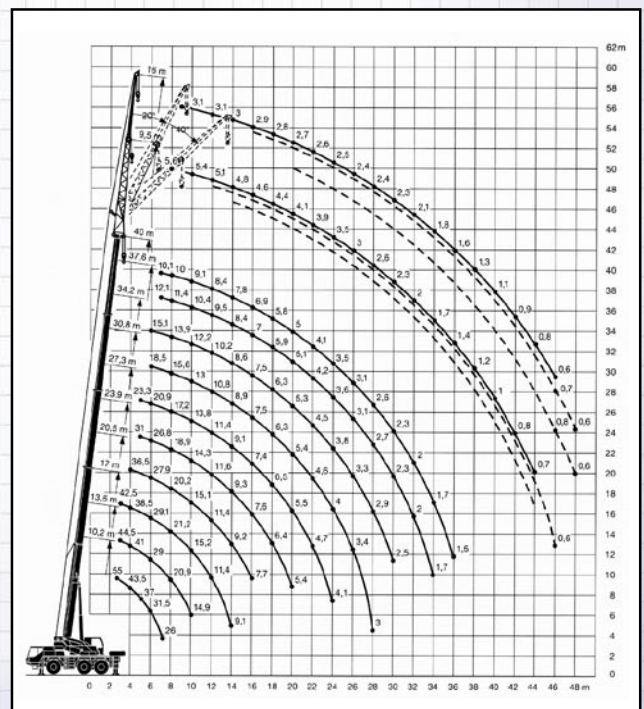
This mobile crane has excellent capacity on half outriggers in all configurations for sites with limited space

LTM1055/1

All Terrain Mobile Crane

Max. Lifting Capacity: **55.0 metric tonne at 2.5 m**

Max boom Length: **57 m**



Tel: 02 888 77888 Fax: 02 888 77877

Visit our website www.gillespiecranes.com.au

Our Strength is Service

