



GILLESPIES

CRANE SERVICES

LTM1090/4.1

All Terrain Mobile Crane Hydraulic Luffing Fly

Max. Lifting Capacity: **90.0 metric tonne at 3 m**

Max boom Length: **76 m**

Featuring



Computerised Lift Plan Simulation

RATED CAPACITY

- 90 Tonnes at 6.2m radius
- 600 kg at 62m radius
- 50m Main Boom
- 19m Fly Jib plus
- 7m Main Boom Extension
- Hook Height to 76m

All Wheel Steer - 8WD

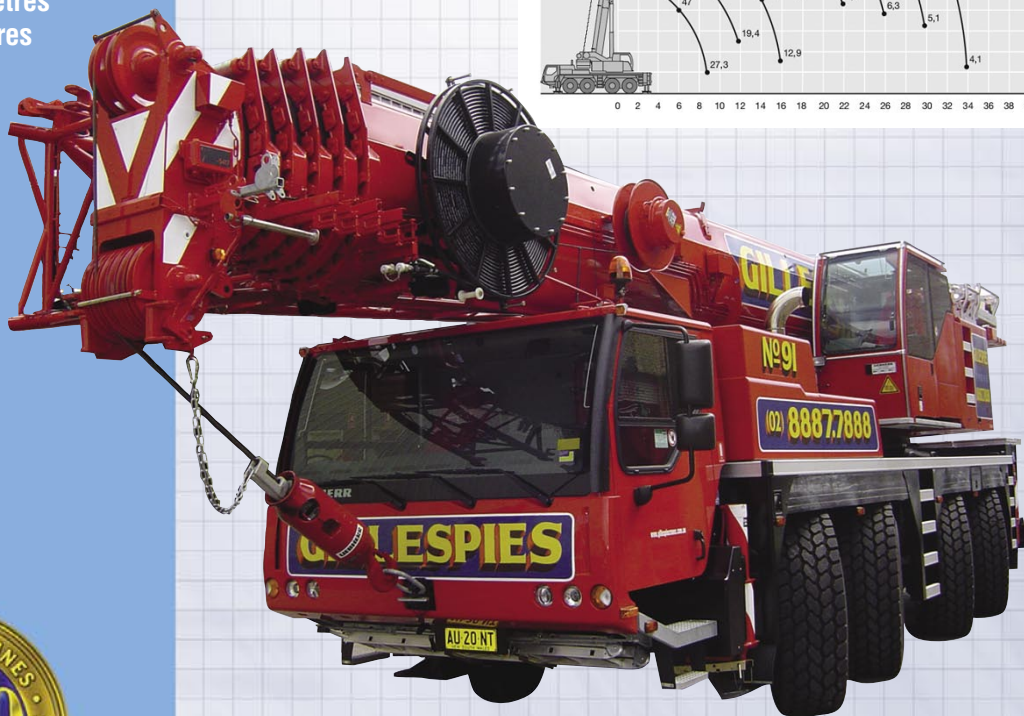
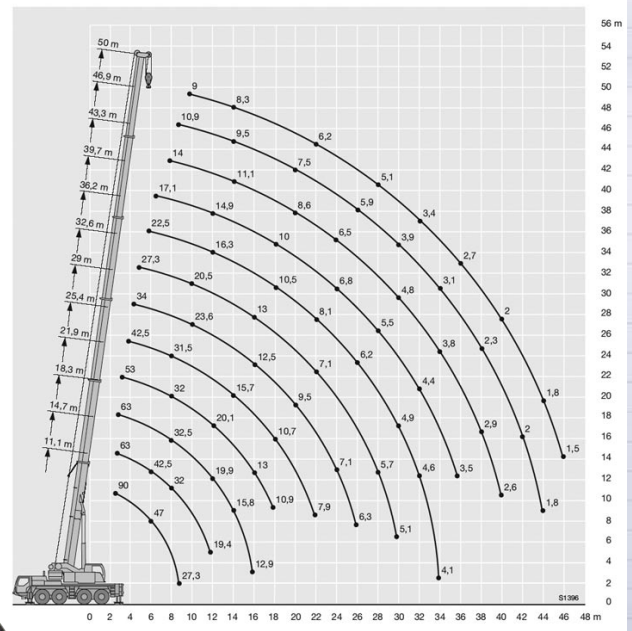
OUTRIGGER BASE

- Full: 8.5m x 7.0m
- Half: 8.5 x 5.0m

OVERALL DIMENSIONS

- Width 2.980 metres
- Length 12.895 metres
- Height 3.955 metres

This mobile crane is ideal for safe manouverability on difficult and rugged sites that require extra reach



Tel: 02 888 77888 Fax: 02 888 77877

Visit our website www.gillespiecranes.com.au

Our Strength is Service