



# GILLESPIES

## CRANE SERVICES

Featuring



Computerised Lift Plan Simulation

### RATED CAPACITY

400 Tonnes at 3m radius

50m Main Boom

84m Luffing Fly

Hook Height to 132m

All Wheel Steer - 8WD

### OUTRIGGER BASE

Full: 10m x 10m

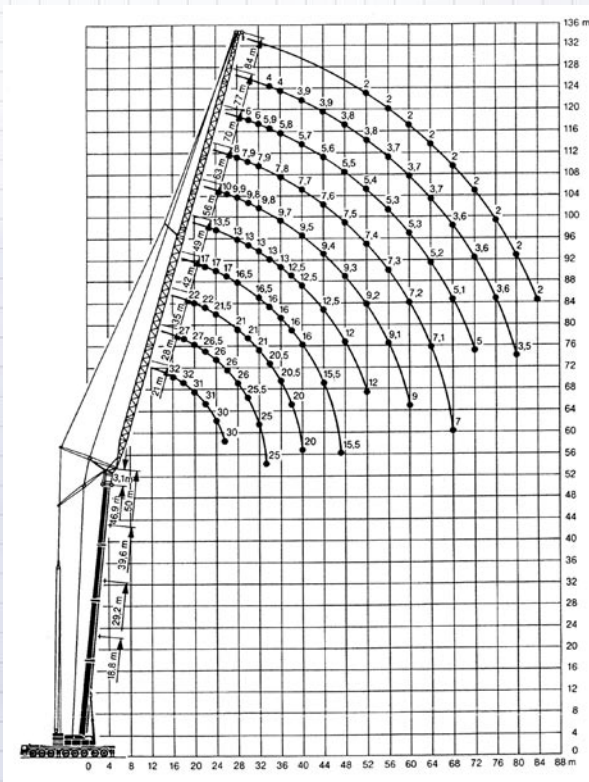
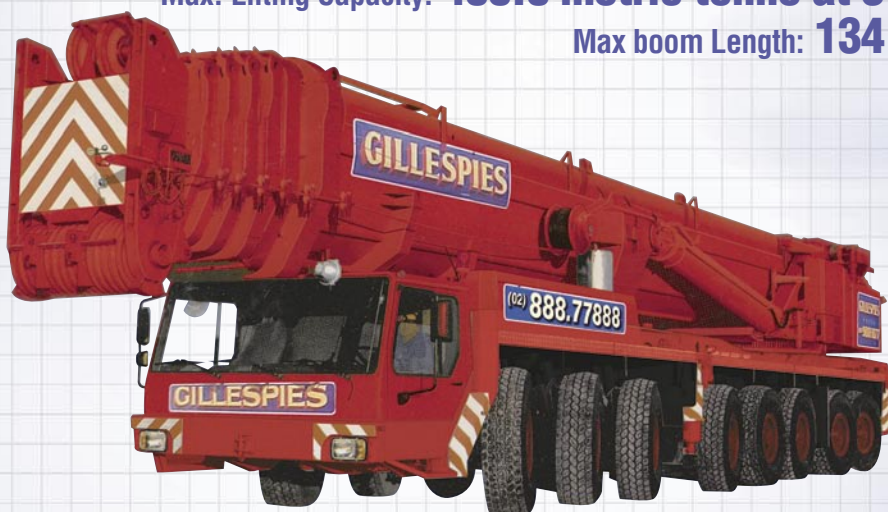
Half: 10 x 6.7m

*This mobile crane is ideal for safe manouverability on difficult and rugged sites that require extra reach*

## LTM1400 Luffing Fly All Terrain Mobile Crane

Max. Lifting Capacity: **400.0 metric tonne at 3m**

Max boom Length: **134m**



Tel: 02 888 77888 Fax: 02 888 77877

Visit our website [www.gillespiecranes.com.au](http://www.gillespiecranes.com.au)

***Our Strength is Service***



# GILLESPIES

CRANE SERVICES

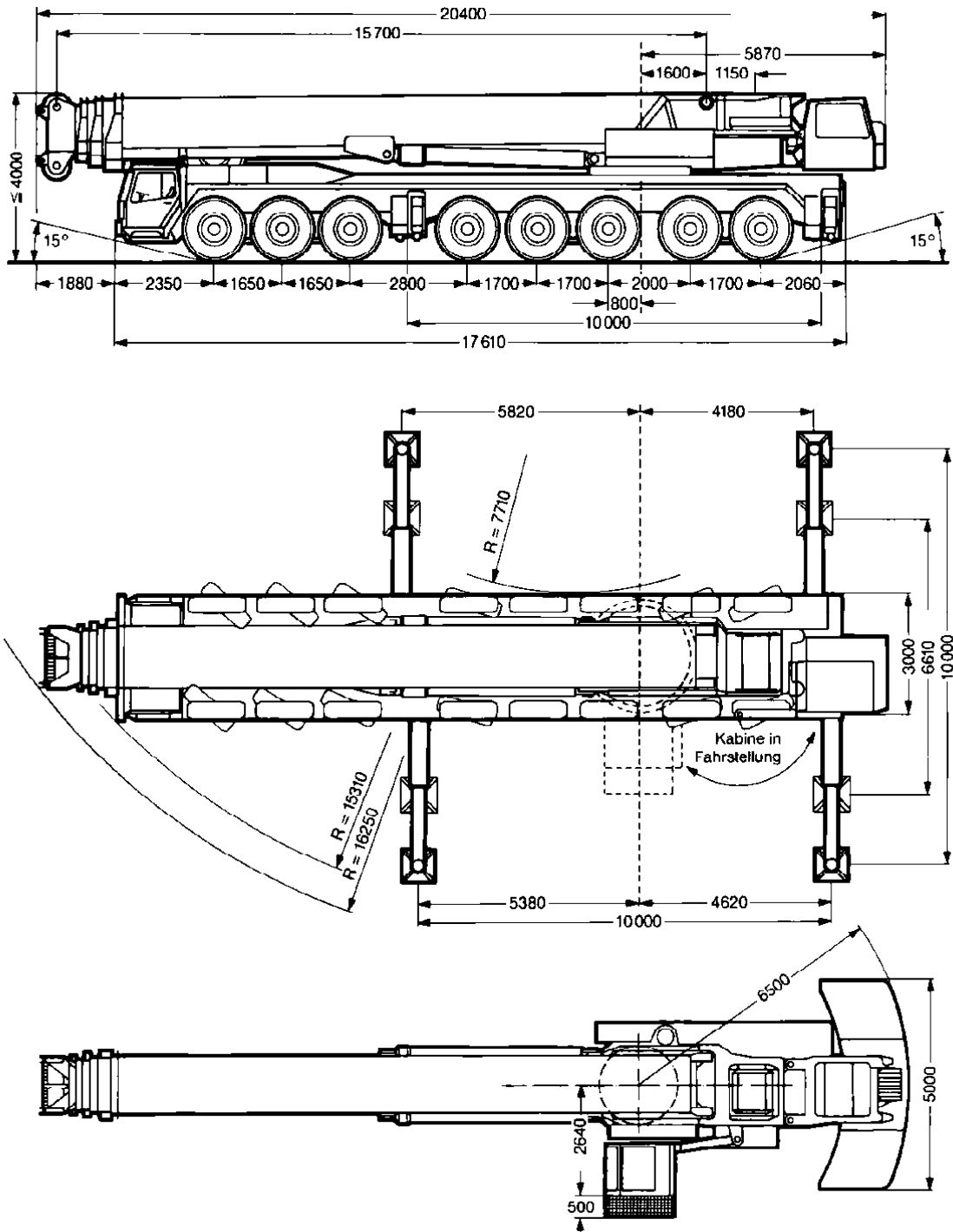


GILLESPIES CRANES NOMINEES PTY LTD  
ABN 63 136 560 616 ACN 001 802 133

Tel: (61 2) 9818 1877  
Fax: (61 2) 9555 1337

84 LILYFIELD RD ROZELLE NSW 2039 AUSTRALIA

### LTM1400 Dimensions





### LTM1400 Luffing Fly Chart



m	18.8 m*										29.2 m*										m
	21 m	28 m	35 m	42 m	49 m	56 m	63 m	70 m	77 m	84 m	21 m	28 m	35 m	42 m	49 m	56 m	63 m	70 m	77 m	84 m	
10	100																				10
11	96																				11
12	92	84																			12
14	86	80	64																		14
16	79	76	62	51																	16
18	68	72	60	49	39																18
20	58	66	58	48	38.5	32.5															20
22		60	56	47	37.5	32	26														22
24		55	52	45	37	31.5	25.5	20													24
26		50	47	44	36	31	25.5	20	16												26
28		46	44	42	34	31	25	20	15.7	12											28
30			40	39	32.5	30.5	24.5	19.5	15.4	11.7											30
32			37	36	30.5	29	24.5	19.5	15.1	11.5											32
34			34	33	29	27.5	24	19.5	14.9	11.3											34
36				31	27.5	26	24	19	14.6	11.1											36
38				29	26	25	22.5	19	14.3	10.9											38
40				27	24	23	21.5	19	14	10.8											40
44					21.5	21	19.5	18.5	13.4	10.5											44
48					19	18.5	18	17	12.8	10.1											48
52						17	16.5	16	12.2	9.8											52
56							15.5	15	11.6	9.4											56
60							14.5	14	11	9											60
64								13	10.5	8.6											64
68									12	10	8.2										68
72										9.4	7.8										72
76											7.4										76
80											7										80
I	0										92										I
II	0										0										II
III	0										0										III

m	39.6 m*										50 m*										m
	21 m	28 m	35 m	42 m	49 m	56 m	63 m	70 m	77 m	84 m	21 m	28 m	35 m	42 m	49 m	56 m	63 m	70 m	77 m	84 m	
14	52																				14
16	51	43																			16
18	50	42	35																		18
20	48	41.5	34	28																	20
22	47	40.5	33.5	27.5	22																22
24	46	40	33	27	22	17.5															24
26		39	32.5	26.5	21.5	17.5	14														26
28		38	32	26	21.5	17.5	14	11													28
30		37	31	26	21	17	14	11	8.5	5.9											30
32		36	30	25	21	17	14	11	8.4	6											32
34			29	24.5	20.5	17	13.5	11	8.3	5.9											34
36			28	24	20	16.5	13.5	11	8.2	5.8											36
38			27	23	19	16	13.5	11	8.2	5.8											38
40				22	18.5	15.5	13.5	11	8.1	5.7											40
44				21	17.5	15	13	11	8	5.6											44
48					16.5	14.5	12.5	10.5	7.9	5.5											48
52						13.5	12	10.5	7.7	5.4											52
56							13	11.5	10.5	7.6	5.3										56
60								11	10.5	7.5	5.3										60
64								10.5	10	7.4	5.2										64
68									10	7.3	5.2										68
72										7.1	5.1										72
76											7										76
80											5										80
84											5										84
I	92										92										I
II	92										92										II
III	92										92										III

\* Teleskopauslegerlängen inkl. 3,1 m Nadeladapter.  
 Lengths of telescopic boom including 3,1 m luffing lattice jib adapter.  
 Longueurs de la flèche télescopique avec 3,1 m raccord pour fléchette relevable.