



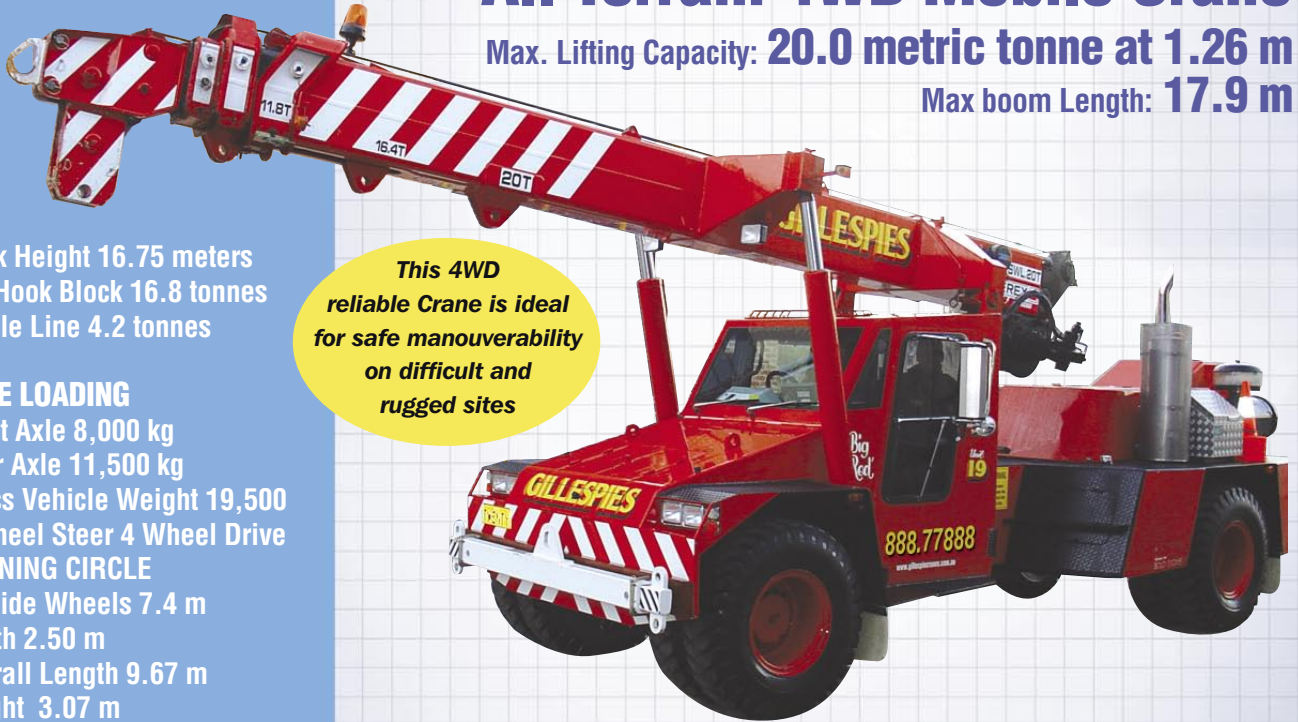
GILLESPIES

CRANE SERVICES

RATED CAPACITY
 20 Tonne at 1.26m radius
 16.8 Tonne at 2.0m
 1.6 Tonne at 15.7m

Franna AT-20 Lift & Carry All Terrain 4WD Mobile Crane

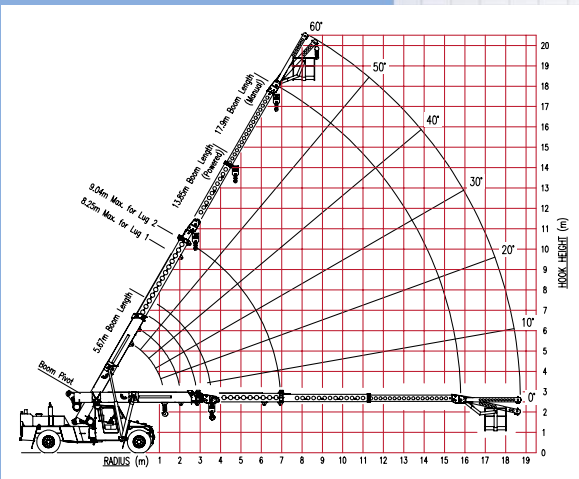
Max. Lifting Capacity: **20.0 metric tonne at 1.26 m**
 Max boom Length: **17.9 m**



**This 4WD
 reliable Crane is ideal
 for safe manoueverability
 on difficult and
 rugged sites**

Hook Height 16.75 meters
 Lift Hook Block 16.8 tonnes
 Single Line 4.2 tonnes

AXLE LOADING
 Front Axle 8,000 kg
 Rear Axle 11,500 kg
 Gross Vehicle Weight 19,500
 4 Wheel Steer 4 Wheel Drive
TURNING CIRCLE
 Outside Wheels 7.4 m
 Width 2.50 m
 Overall Length 9.67 m
 Height 3.07 m



RADIUS	BOOM LENGTH (m)																	
	5.67	6.00	6.50	7.00	7.50	8.00	8.50	9.00	9.50	10.00	10.50	11.00	11.50	12.00	12.50	13.00	13.50	13.85
1.6	16800	16250	15450	14900														
2.0	12600	12600	12600	12600														
2.5	48	51	54	57														
3.0	16800	16800	16500	15700	15100	14700	14350											
3.5	12600	12600	12600	12600	12600	12600	12600											
4.0	42	46	50	53	56	58	60											
4.5	13900	13900	13900	13850	13850	13850	13850	13200	13000									
5.0	12150	12150	12100	12100	12100	12100	12100	12050	12050									
5.5	34	39	44	48	51	54	56	58	60									
6.0	11450	11450	11400	11400	11400	11400	11400	11400	11150	10250								
6.5	9650	9650	9650	9650	9650	9650	9650	9650	9650	9650								
7.0	25	31	37	42	46	49	52	55	57	59	60							
7.5	9650	9650	9650	9650	9650	9650	9650	9650	9650	9500	8150	7500						
8.0	8400	8400	8400	8400	8400	8400	8400	8400	8350	8350	8150	7500						
8.5	9	20	29	36	41	45	48	51	53	55	57	59	60					
9.0	9450	8550	8350	8350	8350	8350	8350	8300	8300	8300	8300	7600	7000	6700	6450			
9.5	8200	7450	7250	7250	7250	7250	7250	7200	7200	7200	7200	7000	6700	6450				
10.0	(3.57)	(3.90)	19	28	35	39	43	47	49	52	54	56	57	59	60			
10.5	6500	6350	6350	6350	6350	6350	6350	6300	6300	6300	6300	6300	6250	6050	5800	5650		
11.0	(4.40)	19	27	34	38	42	45	48	50	52	54	56	58	59	60			
11.5	6650	6500	6500	6500	6500	6500	6500	6500	6500	6500	6500	6500	6500	6450	6250	6050	5800	5650
12.0	5750	5600	5600	5600	5600	5600	5600	5600	5600	5600	5600	5600	5600	5600	5450	5300	5150	
12.5	(4.80)	18	27	33	37	41	44	47	49	51	53	55	56	58	59			
13.0	5850	5350	5250	5250	5250	5250	5250	5250	5250	5250	5250	5250	5250	5250	5250	4850	4700	4600
13.5	5100	4800	4650	4550	4550	4550	4500	4500	4500	4500	4500	4500	4500	4500	4500	4500	4500	4500
14.0	(5.40)	(5.90)	17	25	31	35	39	42	45	47	49	51	53	54				
14.5	4850	4450	4400	4400	4400	4400	4400	4400	4400	4400	4350	4350	4350	4350	4350	4350	4350	4350
15.0	4200	3800	3750	3750	3750	3750	3750	3750	3750	3750	3750	3750	3750	3750	3750	3750	3750	3750
15.5	4100	3750	3700	3700	3700	3700	3700	3700	3700	3700	3700	3700	3700	3700	3700	3700	3700	3600
16.0	3500	3200	3150	3150	3150	3150	3150	3150	3150	3150	3150	3150	3150	3150	3150	3150	3150	3150
16.5	(7.40)	(7.90)	15	23	28	32	36	38	41	43	45	47	49	51	53	54		
17.0	3500	3250	3200	3200	3200	3200	3200	3200	3200	3200	3200	3200	3200	3200	3200	3200	3200	3200
17.5	2950	2750	2700	2700	2700	2700	2700	2700	2700	2700	2700	2700	2700	2700	2700	2700	2700	2700
18.0	(8.40)	(8.90)	15	22	27	31	34	36	38	41	43	45	47	49	51	53	54	
18.5	3000	2800	2800	2800	2800	2800	2800	2800	2800	2800	2800	2800	2800	2800	2800	2800	2800	2800
19.0	2550	2400	2350	2350	2350	2350	2350	2350	2350	2350	2350	2350	2350	2350	2350	2350	2350	2350
19.5	(9.40)	(9.90)	14	21	26	29	31	33	35	37	39	41	43	45	47	49	51	53
20.0	2650	2500	2450	2450	2450	2450	2450	2450	2450	2450	2450	2450	2450	2450	2450	2450	2450	2450
20.5	2200	2100	2050	2050	2050	2050	2050	2050	2050	2050	2050	2050	2050	2050	2050	2050	2050	2050
21.0	(10.40)	(10.90)	13	18	23	26	28	30	32	34	36	38	40	42	44	46	48	50
21.5	2350	2250	2200	2200	2200	2200	2200	2200	2200	2200	2200	2200	2200	2200	2200	2200	2200	2200
22.0	(11.40)	(11.75)	13	18	23	26	28	30	32	34	36	38	40	42	44	46	48	50



Tel: 02 888 77888 Fax: 02 888 77877

Visit our website www.gillespiecranes.com.au

Our Strength is Service

SWL (KG) LESS THAN 10 DEG ARTICULATION
 SWL (KG) GREATER THAN 10 DEG ARTICULATION
 BOOM ANGLE OR RADIUS AT 0 DEG BOOM ANGLE

Weight of slings & hook block to be added to load
 Read and understand warning notes before operating cranes.
 Loads above bold red line are struct.

LMI Duty
 Lifting on WINCH