



# GILLESPIES

## CRANE SERVICES

### LTM1095-5.1

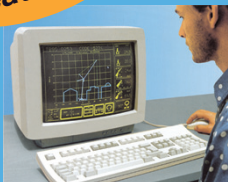
## All Terrain Mobile Crane Hydraulic Luffing Fly

Max. Lifting Capacity: **95 metric tonne at 3m**

Max boom Length: **84m**



Featuring



Computerised Lift Plan  
Simulation

### RATED CAPACITY

95 Tonnes at 3m radius  
1 Tonnes at 58m  
58m Main Boom  
19m Hydraulic Luffing Fly  
Hook Height to 83m  
All Wheel Steer - 6WD

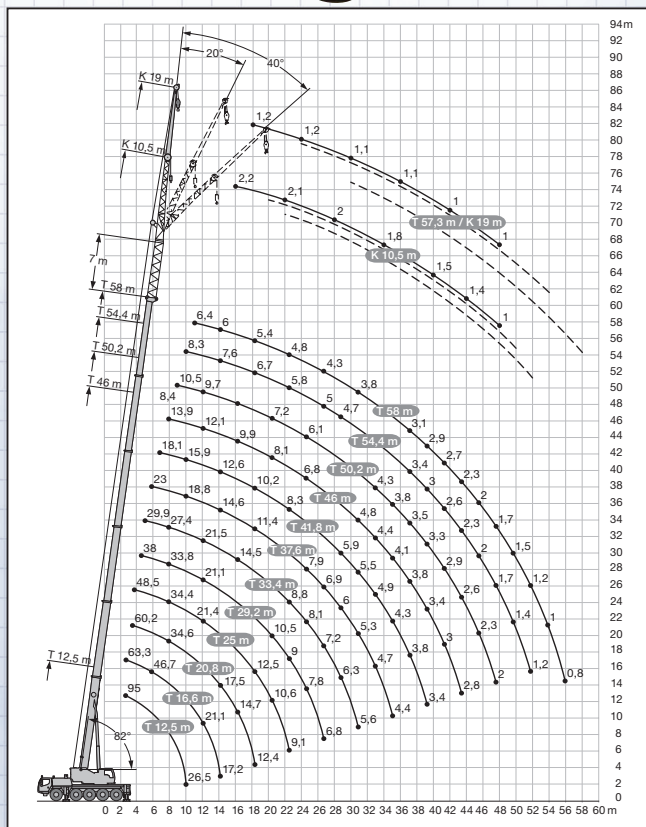
### OUTRIGGER BASE

Full: 7.4 x 7m  
Half: 7.4 x 5m

### OVERALL DIMENSIONS

Width 2.750 metres  
Length 14.6 metres  
Height 4.000 metres

*This mobile  
crane is  
ideal for safe  
manouverability  
on difficult and  
rugged sites  
that require  
extra height*



Tel: 02 888 77888 Fax: 02 888 77877

Visit our website [www.gillespiecranes.com.au](http://www.gillespiecranes.com.au)

**Our Strength is Service**