

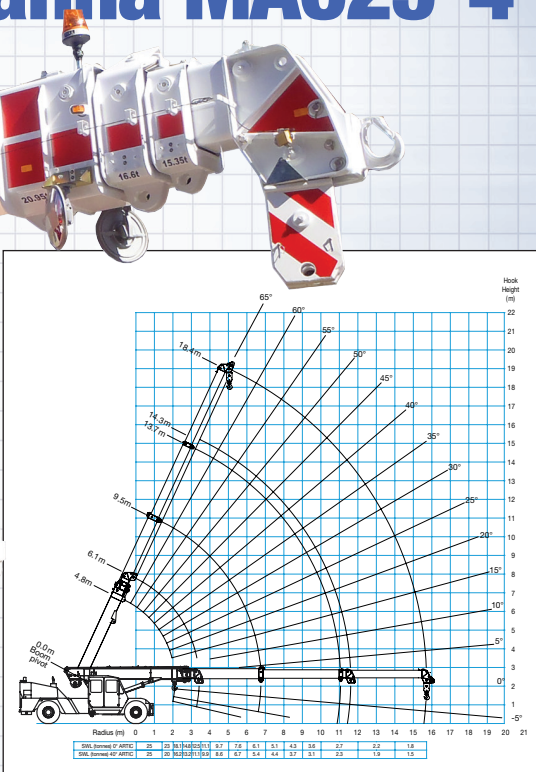
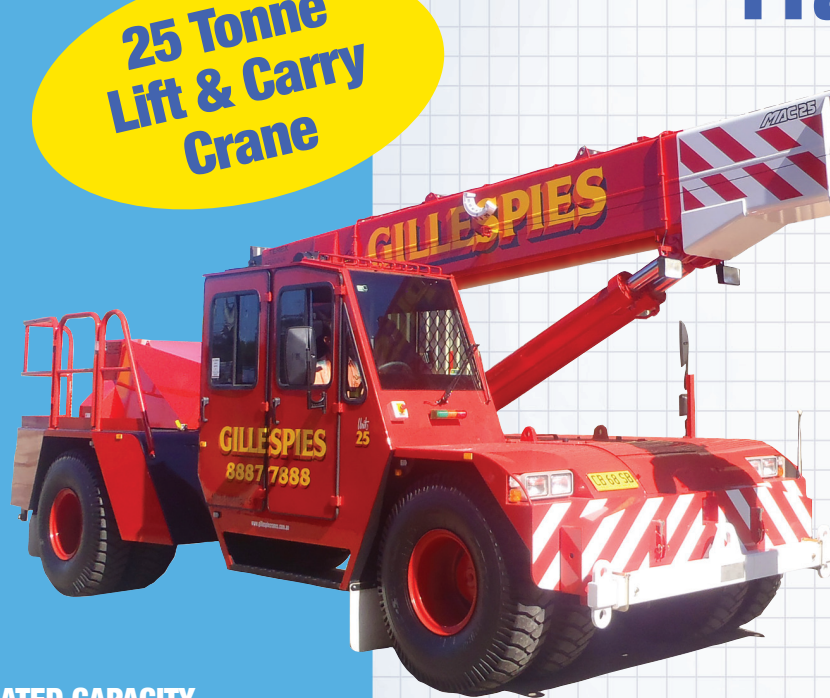


GILLESPIES

CRANE SERVICES

Franna MAC25-4

25 Tonne
Lift & Carry
Crane



RATED CAPACITY

25 Tonne at 1.4m radius
1.8 Tonne at 15.71m
Hook Height 18 metres
Lift Hook Block 25 tonne
Single Line 4.2 tonnes

AXLE LOADING

Front Axle 11,900 kg
Rear Axle 12,000 kg
Total 23,900 kg

TURNING CIRCLE

Outside Wheels 7.9 metres

DIMENSIONS

Width 2.720 metres
Length 9.985 metres
Height 3.075 metres

Fallblock, Rear Counterweight, Third Boom Retracted

6.1-14.0m AS 1418.5

II	Boom Length (m)																I
	6.1	6.5	7.0	7.5	8.0	8.5	9.0	9.5	10.0	11.0	12.0	13.0	14.0				
m	kg	kg	kg	kg	kg	kg	kg	kg	kg	kg	kg	kg	kg	m			
1.4	25000	25000	25000	25000	24500	23950								1.4			
	24800	24800	24800	24750	24550	24300											
	49°	52°	50°	58°	61°	63°	65°										
2.0	22950	22950	22950	22950	22850	22300	21800	22150	22150					2.0			
	20550	20550	20500	20450	20450	20450	20350	20350	20300								
	41°	49°	52°	55°	58°	60°	62°	64°									
2.5	18100	18100	18100	18000	17850	17650	17650	17650	17650	17650	17650			2.5			
	17300	17300	17250	17250	17200	17200	17150	17150	17150	17150							
	16150	16150	16100	16100	16050	16050	16000	15950	15950								
3.0	14200	14200	14200	14150	14100	14050	14050	14050	14050	14050	14050			3.0			
	13200	13200	13150	13150	13150	13150	13100	13100	13100	13100							
	22°	30°	30°	41°	46°	48°	52°	54°	57°	60°	64°						
3.5	12500	12450	12450	12450	12450	12400	12400	12400	12350	12350	12350	12350		3.5			
	11900	11900	11900	11900	11850	11850	11850	11850	11850	11850	11850						
	11100	11100	11100	11050	11050	11050	11000	11000	10950	10950	11000						
(3.1)	10°	28°	35°	40°	44°	47°	50°	53°	57°	61°	63°		3.5				
	11100	10700	10700	10700	10650	10650	10650	10650	10650	10650	10650	10550					
	10600	10200	10200	10200	10200	10150	10150	10150	10150	10150	10150	10100					
4.0	9550	9550	9550	9550	9550	9450	9450	9450	9450	9450	9450	9450		4.0			
	(3.9)	18°	27°	34°	39°	43°	46°	49°	54°	58°	61°	63°					
	8950	8500	8250	8250	8250	8250	8250	8250	8200	8200	8150	8150					
5.0	8200	8100	7850	7850	7850	7850	7850	7850	7850	7850	7850	7850		5.0			
	8550	7500	7250	7250	7250	7250	7250	7250	7250	7250	7250	7250					
	(4.4)	(4.9)															
6.0		7550	6750	6600	6600	6600	6600	6600	6600	6650	6650	6650		6.0			
		7200	6450	6250	6250	6250	6250	6250	6250	6250	6250	6250					
		5850	5850	5850	5850	5850	5850	5850	5850	5850	5850	5850					
7.0		(5.4)	(5.9)	16°	24°	30°	38°	44°	44°	44°	49°	53°		7.0			
		6100	5550	5400	5400	5400	5400	5400	5400	5400	5400	5400					
		5800	5250	5150	5150	5150	5150	5150	5150	5150	5150	5150					
8.0		5550	4850	4750	4750	4750	4750	4750	4750	4700	4700	4350		8.0			
		(8.4)	(8.9)	15°	29°	33°	39°	42°	47°								
		4500	4350	4350	4350	4350	4350	4350	4350	4350	4350	4350					
9.0		4800	4300	4300	4300	4300	4300	4300	4300	4300	4300	4300		9.0			
		4400	3950	3950	3950	3950	3950	3950	3950	3950	3950	3950					
		4250	3850	3850	3850	3850	3850	3850	3850	3850	3850	3850					
10		3650	3650	3650	3650	3650	3650	3650	3650	3650	3650	3650		10			
		(8.4)	14°	28°	34°												
		3400	3100	3100	3100	3100	3100	3100	3100	3100	3100	3100					
11		3100	2800	2800	2800	2800	2800	2800	2800	2800	2800	2800		11			
		(9.4)	13°	25°													
		3100	2850														
12			2950	2700	2700	2700	2700	2700	2700	2700	2700	2700		12			
			2600	2400	2400	2400	2400	2400	2400	2400	2400	2400					
			(10.4)	13°													
12			2250	2250	2250	2250	2250	2250	2250	2250	2250	2250		12			
			2150	2150	2150	2150	2150	2150	2150	2150	2150	2150					
			(11.4)														

- RC (kg) at 0° articulation
- Boom angle
- RC (kg) at 25° articulation
- Radius at 0° boom angle
- RC (kg) at 40° articulation
- Loads above red line are structural

Third Boom Extending

15.0-18.42m AS 1418.5

II	Boom Length (m)				I
	15.0	16.0	17.0	18.42	
3.5					3.5
4.0					4.0
5.0					5.0
6.0					6.0
7.0					7.0
8.0					8.0
9.0					9.0
10					10
11					11
12					12
13					13
14					14
15					15
15.71					15.71

Notes to lifting capacity

Lifting capacities do not exceed 66.6% of tipping load. Weight of hook blocks and slings is part of the load, and is to be deducted from the capacity ratings. Consult Rated Capacity Manual for further details.

Data published herein is intended as a guide only and shall not be construed to warrant applicability for lifting purposes. Crane operation is subject to the computer charts and Rated Capacity Manual both supplied with the crane.



Tel: 02 888 77888 Fax: 02 888 77877

Visit our website www.gillespiecranes.com.au

Our Strength is Service