



GILLESPIES

CRANE SERVICES

KATO CR200Ri

Rough Terrain City Crane

Max. Lifting Capacity: **20.0 metric tonne at 2.5 m**

Max boom Length: **33.8 m**

RATED CAPACITY

20 Tonnes at 2.5 m radius

1Tonne at 18 m

Max Outrigger Base

5.68 m x 5.40 m

AXLE LOADING

Front Axle 9,875 kg

Rear Axle 9,840 kg

Gross Vehicle Weight

19,715 kg

DIMENSIONS

Wheel Base 3.25 m

4 wheel Steer - 4WD

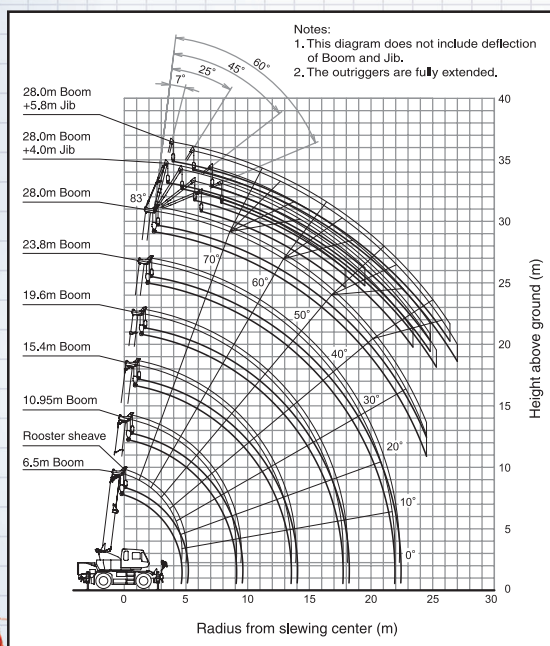
Width 2.49 m

Overall Length 8.71 m

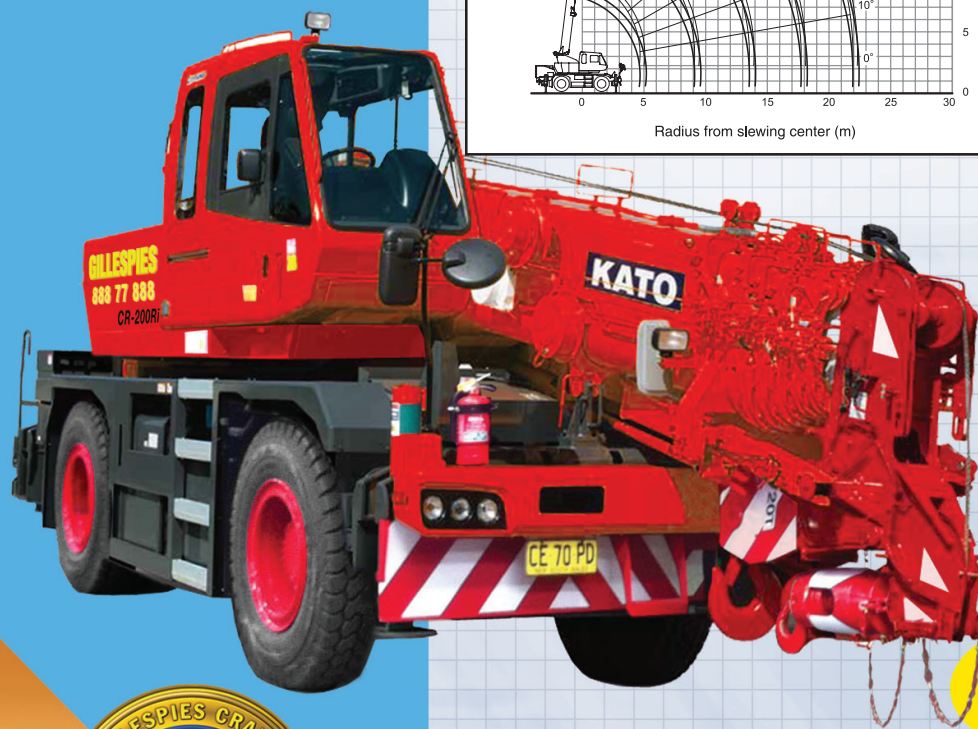
Height 3.21 m

Tailswing 2390 mm

This 4WD highly manoevrable crane is ideal for tight sites that require extra manoevrability



Working radius (m)	Outriggers fully extended (5.4m) - 360° full range					
	6.5m Boom	10.95m Boom	15.4m Boom	19.6m Boom	23.8m Boom	28.0m Boom
2.5	20.00*	12.50	10.00	7.50		
3.0	18.50*	12.50	10.00	7.50		
3.5	16.20	12.50	10.00	7.50	6.00	5.00
4.0	14.00	12.50	10.00	7.50	6.00	5.00
4.5	12.00	12.00	10.00	7.50	6.00	5.00
5.0		11.05	10.00	7.50	6.00	5.00
5.5		10.20	9.30	7.50	6.00	5.00
6.0		9.30	8.55	7.50	6.00	5.00
6.5		7.85	7.80	7.10	5.75	5.00
7.0		6.75	6.70	6.55	5.40	4.65
8.0		5.15	5.10	5.45	4.75	4.05
9.0		4.05	4.00	4.35	4.25	3.60
10.0			3.20	3.55	3.75	3.20
11.0			2.55	2.90	3.10	2.90
12.0			2.05	2.40	2.60	2.65
13.0			1.65	2.00	2.20	2.35
14.0			1.45 (13.5m)	1.65	1.85	2.00
15.0				1.35	1.55	1.70
16.0				1.10	1.30	1.45
17.0				0.90	1.10	1.25
18.0				0.80 (17.5m)	0.90	1.05
19.0					0.75	0.90
20.0					0.60	0.75
21.0					0.50	0.60
22.0					0.45 (21.5m)	0.50
23.0						0.40
24.5						0.30
Standard hook	for 20 ton					
Hook mass	150kg					
Parts of line	7*,6	6		4		



Hydraulic
Luffing
Fly Jib

Can Stand and
Operate or Pick
and Carry

Tel: 02 888 77888 Fax: 02 888 77877

Visit our website www.gillespiecranes.com.au

Our Strength is Service