



GILLESPIES

CRANE SERVICES

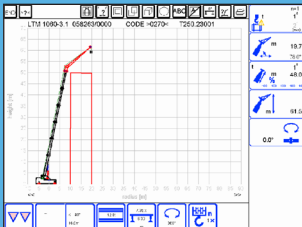
LTM1060.3.1

All Terrain Mobile Crane

Max. Lifting Capacity: **60.0 metric tonne**

Max boom Length: **64 m**

Featuring



Computerised Lift Plan Simulation

RATED CAPACITY

60 Tonnes
900 kg at 48m radius
48m Main Boom
16m Fly Jib
Hook Height to 66m

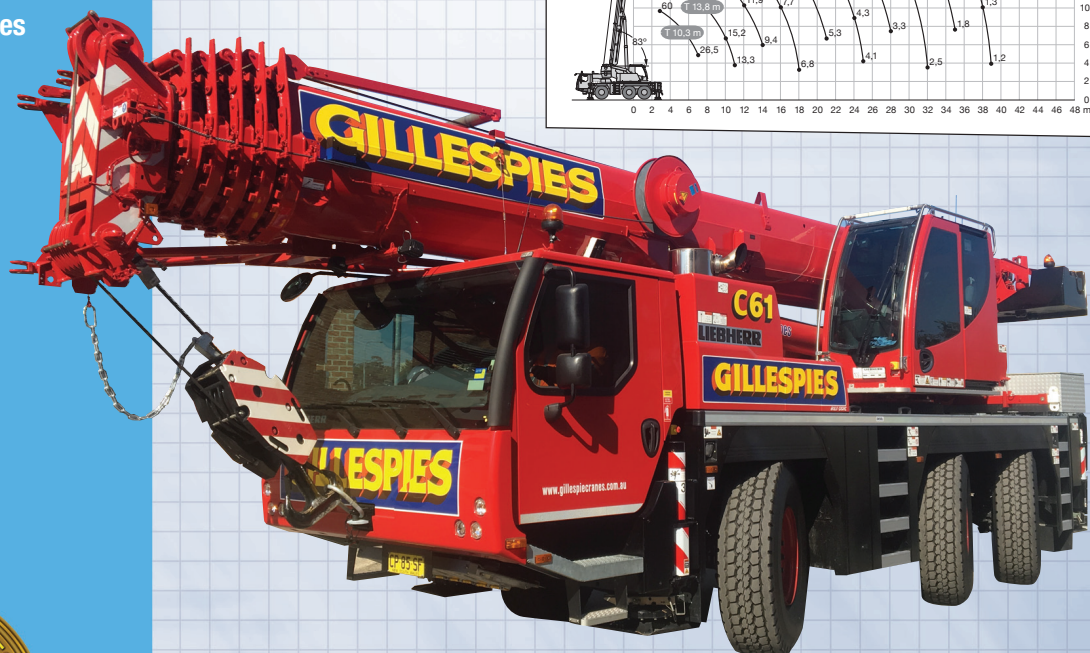
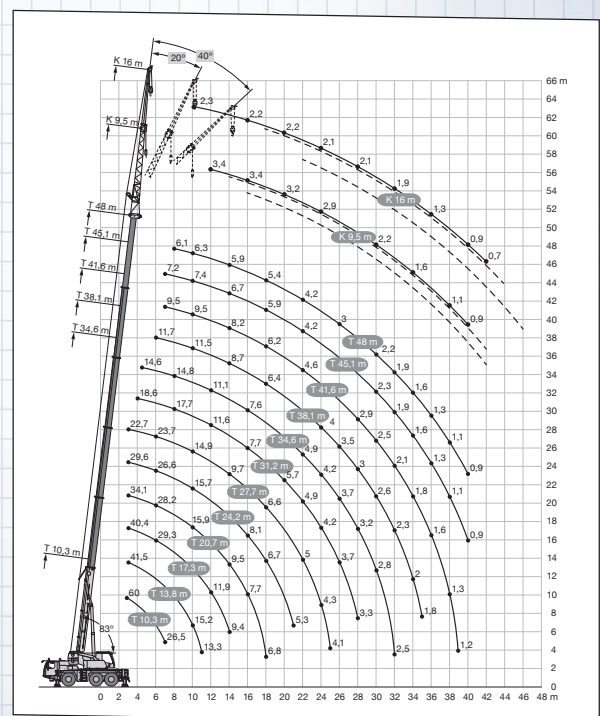
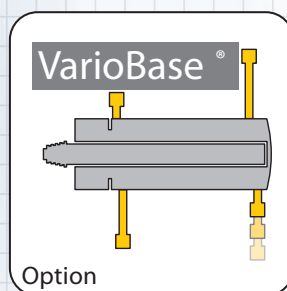
All Wheel Steer - 4WD

OUTRIGGER BASE

Full: 7.4m x 6.3m
Half: 7.4 x 4.5m

OVERALL DIMENSIONS

Width 2.60 metres
Length 11.53 metres
Height 3.7 metres

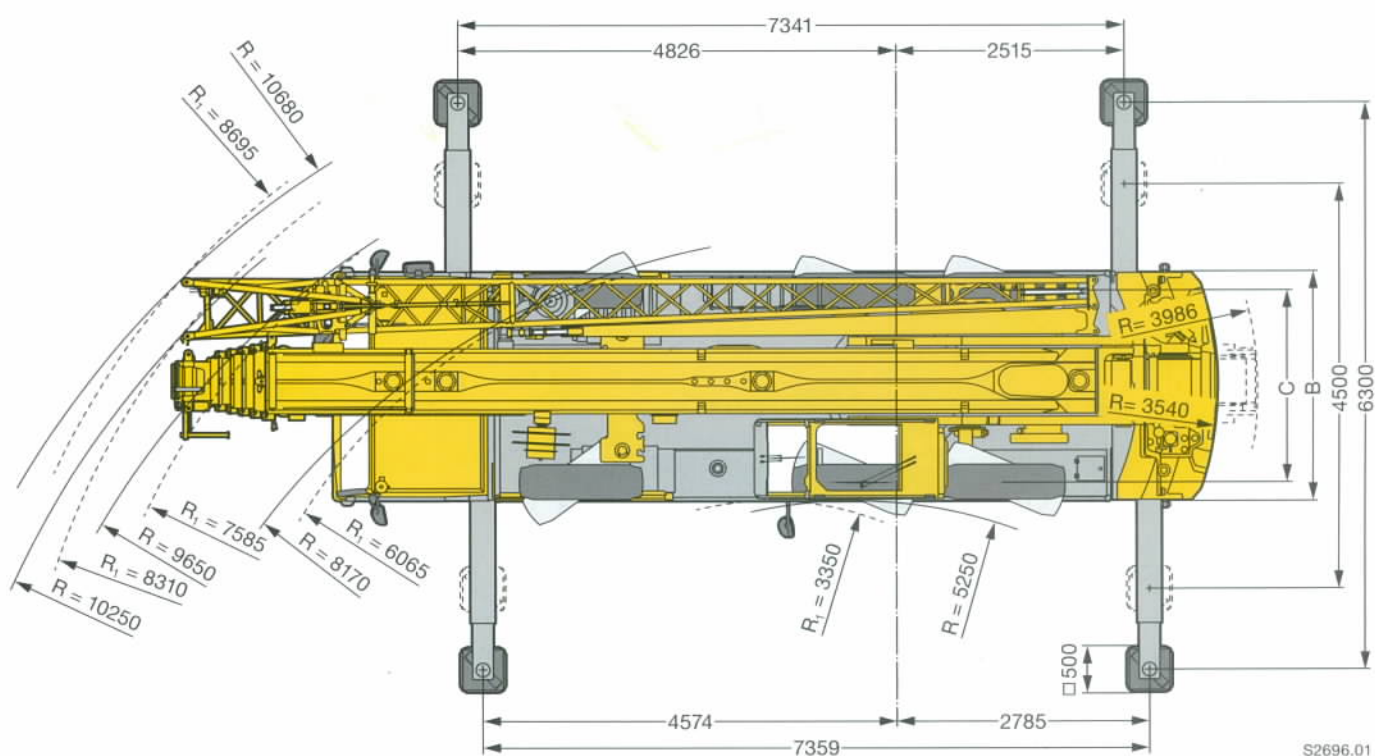
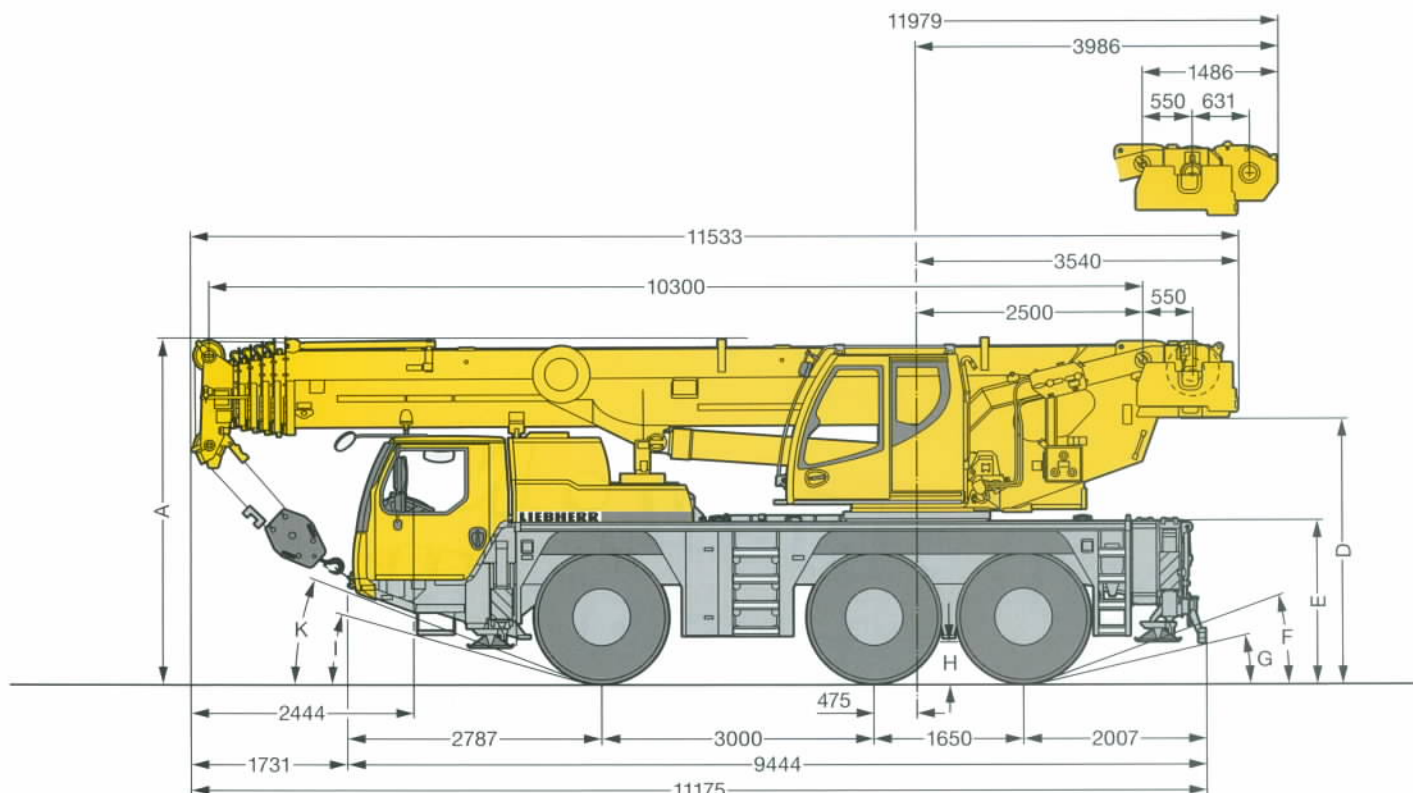


Tel: 02 888 77888 Fax: 02 888 77877

Visit our website www.gillespiecranes.com.au

Our Strength is Service

Maße
Dimensions
Encombrement • Dimensioni
Dimensiones • Габариты крана



S2696.01

R_i = Allradlenkung · All-wheel steering · Direction toutes roues · Tutti gli assi sterzanti · Dirección en todos los ejes · Поворот всеми колесами

	Maße · Dimensions · Encombrement · Dimensioni · Dimensiones · Размеры mm										
	A	A	B	C	D	E	F	G	H	I	K
		100 mm*									
385/95 R 25 (14.00 R 25)	3750	3650	2550	2160	2863	1710	18°	11°	375	13°	18°
445/95 R 25 (16.00 R 25)	3800	3700	2550	2100	2913	1760	20°	12°	425	15°	20°
525/80 R 25 (20.5 R 25)	3800	3700	2690	2170	2913	1760	20°	12°	425	15°	20°

* abgesenkt · lowered · abaissé · abbassato · suspensión abajo · шасси осажено